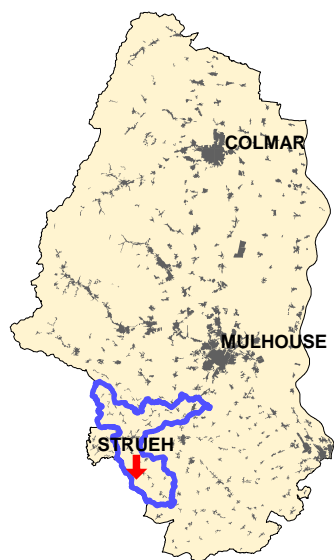


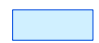



PPR - Mouvements de terrain et sur-risque sismique
Vallées de la Largue et du Traubach



-  Limite du PPR
-  Limite communale
-  B1 - Aléas faible
-  B2 - Aléas moyen

Echelle : 1/10 000
06/01/2006
SUAH - SIG
source Etude BRGM 2001
©IGN SCAN25© 1998

